

Ko tā te pūtaiao...

He whakawhenua i a ia anō
ki te kaupapa Māori, arā,
mā te Māori, mō te Māori.

He kōrero mō te taketakena,
mō te orokohanganga.

He whakamātāmua,
he whakaū hoki
i te tuakiri Māori.

He whakamana i te whakapapa -
e aro nei ki te hononga i waenga
i a 'tātou', i ngā atua Māori,
i tō tātou taiao hoki.

He whakanoho pū
i a ia anō ki te ao Māori,
ka arahina hoki e te Māori.

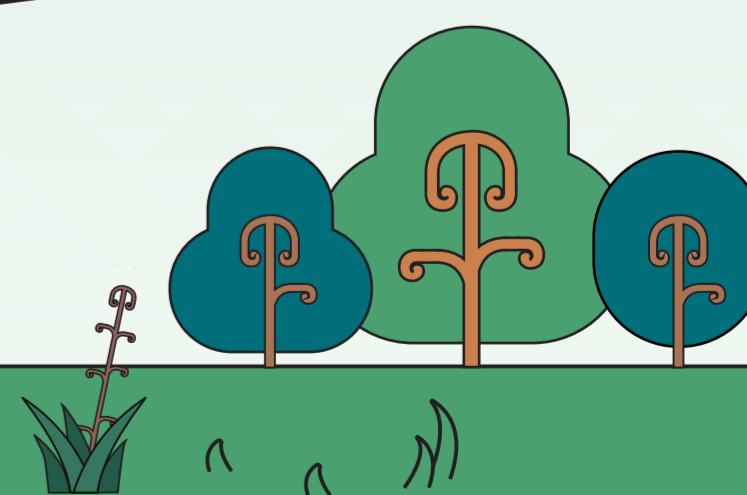
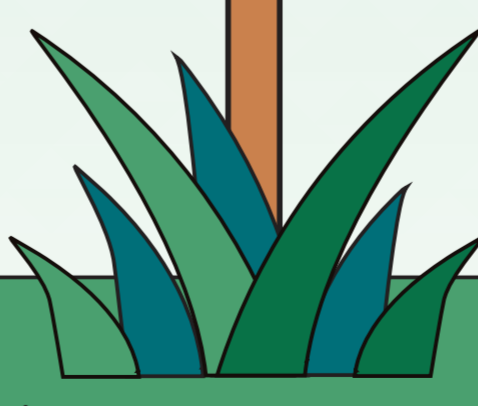
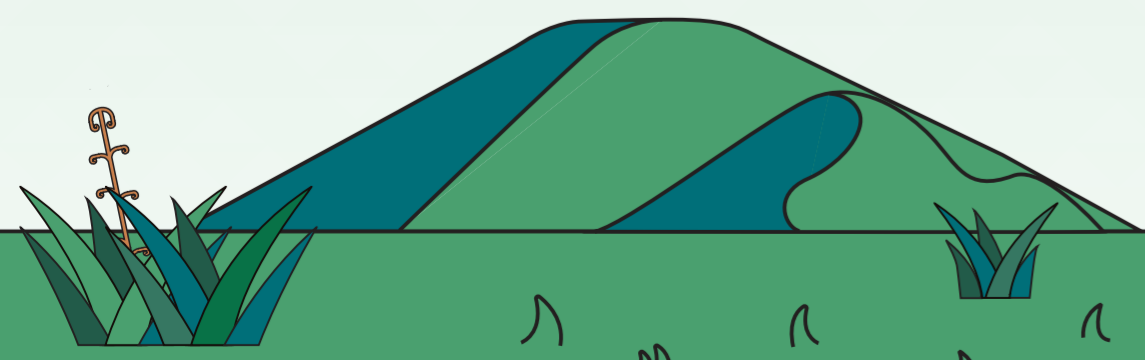
He whakanui i tō
te Māori mōhio,
i tā te Māori mahi,
me tō te Māori āhua.

He whakaū i a ia anō
ki te whenua,
me ngā tāngata
o aua whenua.

He hāpai i te mana
o te mātauranga Māori.

He whakawhanake i a ia anō,
he titiro whānui ki te ao.

He whakaū i te ako i ngā
ariā Māori, i ngā uara Māori,
i ngā tikanga Māori,
i te reo Māori hoki.



Pūtaiao...

