

Pū te Rongo

**Whakānuia
te reo Māori**

Pū te
Rongo

Ngā Ihirangi

Whakanuia te reo Māori



Image courtesy of The Office of the Governor General

Pānui 1:
He Ngaringari

Pānui 2:

Ka Whai Ingoa Māori
ngā Kararehe

Pānui 3:

Te Taura Whiri i te Reo Māori

Pānui 4:

He Reo Tata Korehāhā

Pānui 5:

Ngā Tohu Reo Māori

Pānui 6:

Ngā Kēmu Reo Māori

Pānui 7:

Ngā Taupānga Reo Māori

Pānui 8:

Mahuru Māori - Kia Kōrero
Tātou i te Reo Māori

Pānui 9:

Kia Kaha te Reo Māori!

Pānui 10:

Te Hītori o te Kōhanga Reo

He Ngaringari



Image courtesy of The Big Idea

Panui 1

I mōhio rānei koe kāore te Ngaringari a te Motu i whai kupu Māori i tōna orokohanga? I te tau 1991, i waiatatia e Kahurangi Hinewehi Mohi te ngaringari nei i roto i te reo Māori ki te kēmu Ōpango i Ingarangi. Ahakoa ngā kōrero whakatakē, nā tana tū rangatira i wātea ai te huarahi kia reorua te ngaringari a te motu ki ngā kaupapa mātuatua o te ao.

I te tau 2019, i Te Wiki o te Reo Māori, i whakarewaina e Kahurangi Hinewehi a Waiata Anthems hei whakanui i ngā tau e 20 kua pahure ake nō tana waiata tuatahi i te ngaringari a te motu i te reo Māori.

I mahi tahi a Kahurangi Hinewehi me ētahi kaiwaiata rongonui 11 o Aotearoa ki te waihanga i tētahi kōpae waiata o ā rātou waiata tino reka i te reo Māori. Ko ētahi o ngā kaiwaiata, ko Lorde rātou ko Drax Project, ko Six60, ko Benee, ko Hollie Smith, me ētahi atu. He tuatahitanga tēnei ki ētahi kaiwaiata, te waiata i roto i te reo Māori, heoi, i hīkina e rātou te manuka.

I te marama o Mahuru, i te tau 2022, i whakaputaina ngā waiata e 26 hei whakamānawa i ētahi kaupapa whakahirahira, pēnei i te huringa tau 50 o Te Matatini me te Petihana Reo Māori, me te huringa tau 40 o Te Kōhanga Reo me Te Karere.

E taea nei a Waiata Anthems te pāho i ngā paehiko matua, ka mutu, kua whakaritea e TVNZ tētahi kohinga hōtaka e aro ana ki te tukanga whakamāori.

Whakanuia te reo Māori!

Kupu Hou

Ngaringari – anthem.

Te waiata e whakanui ana i a Aotearoa.

Orokohanga – origin, beginning.

Te tīmatanga rā anō o te ao.

Kapa Ōpango – All Blacks. *Te kapa whutupōro o Aotearoa.*

Whakarewa – launch. *He tuku ki te ao.*

Petihana – petition. *He pepa, he tono hei haina mā te iwi whānui.*

Ka Whai Ingoa Māori ngā Kararehe

Panui 2

Kia ora, e te hunga kaingākaunui ki ngā kararehe! Ka toro atu ana koe ki te whare kararehe i Tāmaki, ka taea e koe te ako ngā ingoa Māori o ō tino kararehe. Kua waihangahia mai e te whare kararehe tētahi mahere motuhake e whakaatu nei i ngā ingoa o ngā kararehe pai katoa ki a koe i roto i te reo Māori. Engari, ehara i te mea i māmā te waihanga i tēnei mahere, nā te mea ko te nuinga kāore i whai ingoa Māori!

Nō reira, i tono te tīma o te whare kararehe i Tāmaki ki tētahi kāhui mātanga reo ki te āwhina i a rātou ki te whakamāori i ngā ingoa o ngā kararehe. I mōhio kē rātou ki ngā ingoa Māori o ētahi o ngā kararehe, heoi, mō ērā kāore i mōhiohia, i arohia e rātou te āhua me te rahi o te kararehe, e pai ai tā rātou waihanga i ētahi ingoa e hāngai ana. I ētahi wā, i whakamahia e rātou ngā kupu mino.

He rawe te kite i te pikinga haeretanga o te tokomaha, pērā i ngā whare kararehe, e pīrangi ana ki te whakamahi i te reo Māori. Ka toro tahi ana koe ki te wāhi rā me tō whānau, kua taea e koe te kōrero mō ngā ingoa o ngā kararehe i roto i te reo Māori.

He kohinga tiriata tā te Wāhi Kararehe Nui o Tāmaki Makaurau e kīia nei ko Tipi Nuku. Ko tā Tipi Nuku he whakaako i ngā momo kararehe ki ngā tamariki i te reo Māori. Anei ētahi anō kōrero...



Mā ē-nei momo kokenga whakahirahira e ora tonu ai, e whakanuia tonutia ai tō tātou reo.

Karawhiua te reo Māori!



Auckland ZOO

Te Taura Whiri i te Reo Māori



Images courtesy of Te Taura Whiri i te Reo Māori

Panui 3

Kia ora! I mōhio rānei koe he rōpū motuhake tā tātou i Aotearoa nei e tiaki nei i te reo Māori? Ko tōna ingoa, ko Te Taura Whiri i te Reo Māori. I whakatūria te rōpū whakahaere nei i te tau 1987 i te whakamanahia o Te Ture mō Te Reo Māori. Ko tā tēnei ture, he whakaū i te mana o te reo Māori hei reo whaimana i Aotearoa nei, ka mutu, he whakaū hoki i tā te Kāwanatanga i kī taurangi ai mō te whakarauora me te whakahaumaru i te reo.

Nōnamata nei he maha ngā ture i tāmi i te whakamahinga o te reo Māori, ā, ko te reo Pākehā anake tērā i whakaaengia. Nō reira, he wāhanga nui tō Te Taura Whiri i te Reo Māori i roto i te akiaki i te hunga kia tokomaha ake ngā kaikōrero Māori. Hei whakatutuki i tēnei, ka waihanga rātou i ngā pukapuka, i ngā ataata, me ngā hōtaka ipurangi hei tautoko i te hunga ki te ako me te whakaako i te reo Māori. Ka tautoko rātou i te whakamahinga o te reo i roto i ngā kura, i ngā wāhi mahi, me ngā wāhi tūmatawhānuī. Ka whakarite hoki rātou i ngā whakamānawatanga mō Te Wiki o te Reo Māori me Mahuru Māori.

Torohia atu a www.reomaori.co.nz e kitea atu ai ētahi o ā rātou mahi hei whakarauora i te reo Māori.

Ka rawe!

He nui ngā
rauemi kore utu i
reomaori.co.nz.
E taea ana e koe
te tiki ake me te tā mai
mō te kore utu!

I mōhio
rānei
koe?



He Reo Tata Korehāhā

Panui 4

I mōhio rānei koe, nō ngā tau tata tonu nei, i kīia rā te reo Māori he reo tata korehāhā? Ko te tikanga o tēnei, he tokoiti iho te hunga kōrero Māori i ia tekau tau, ka mutu, i noho mōrearea te kōrerohia o te reo i te anamata.

Engari, nā te aha i pēnei ai? Nā ētahi Kāwanatanga tuatahi o Aotearoa i whakatū ētahi ture e whiua ai ētahi o ō tātou tīpuna ina kōrero Māori ai rātou. I tohutohua hoki ngā tamariki kia whākina ō rātou whānau mehemea ka rongu rātou i te reo Māori i te kāinga! I pōhēhē te Kāwanatanga o tērā wā ka whai oranga a Ngāi Māori mēnā ka kōrero Pākehā,

kia pērā hoki ō rātou āhua i ō tauwiwi mā. Ko te mate kē, i tokoiti iho ērā i kōrero i te reo, i whai hoki i ngā tikanga.

Maringanui he tokomaha ngā Māori i whawhai kia tiakina te reo Māori hei taonga mā Aotearoa, ā, ko te otinga atu, ko te kī taurangi a te Kāwanatanga ka tiakina, ka whakatairangatia, ka tautokona hoki e rātou te whakarauoratanga o te reo Māori. I te tau 1987, i whaimana te reo Māori i Aotearoa nei, i te taha o te reo rotarota. Nō reira, kia kua e tukuna tō tātou reo ātaahua kia hemo, engari kē me kōrero i ngā wā me ngā wāhi katoa!

Kupu Hou

Mōrearea – in a crisis, exposed to danger. *He raru nui, he tairaru.*

Whākina – confession, revelation. *He whakapuakinga, he whakaputanga.*

Maringanui – fortunately. *He kupu anō mō te waimarie.*

Otinga – result. *Ko te whakataunga o tētahi raru.*

Kua tata korehāhā te whā tekau ōrau o ngā reo e kōrerotia ana i te ao.

I mōhio rānei koe?



Ngā Tohu Reo Māori

Panui 5

Kua rongorānei koe mō Ngā Tohu Reo Māori? He hui motuhake tēnei e whakanui nei i ngā tutukitanga me ngā kaupapa mahi a te hunga e whakatairanga ana, e manaaki ana i te reo Māori. Kua rua tekau tau ēnei tohu e whakahaerehia ana, ā, ko ngā tohu tuatahi i whakatūria rā e Te Taura Whiri i te Reo Māori i te tau 2003. Ka tū Ngā Tohu Reo Māori i ia rua tau, ka mutu, kua hau ōna rongorūputa noa i te hapori Māori.

Ka whakarangatira Ngā Tohu Reo Māori i ngā tāngata nō ngā hau e whā, ā, ka whakanui hoki ngā tohu nei i ngā whakahekenga werawera me te ngākau titikaha o ērā e hāpai ana i te whakarauoratanga o te reo Māori, tae rā anō ki ngā kaiako, ki ngā kaipāho, ki ngā ringapuoro, me te huhua kē noa atu. Arā ngā momo tohu rerekē, pērā i Te Tohu Oranga Angitu me Te Tohu mō Te Wiki o te Reo Māori. I tū ngā tohu whakamutunga i te tau 2022, ka mutu, i whakanuia ngā tau e 50 nō te tāpaetanga o te petihana reo Māori ki pāremata e Hana Te Hemara i te tau 1972.



Nā konā i whakawhiwhia ai a Ngā Tamatoa, te reo irirangi ā-iwi tuatahi, me te kōhanga reo tuatahi ki ētahi tohu.

Kei te pai noa iho te whakaingoa i tētahi tangata, ahakoa ko wai ia, nā wai rānei ia i tautapa. Nō reira, whakaarotia ngā tāngata e whakatairanga ana i te reo Māori i tō rohe.

Ehara i te mea me Māori koe e whakaingoaia ai, e whai tohu ai rānei koe i Ngā Tohu o te Reo Māori, engari e tika ana kia tū koe hei toa mō te reo Māori!

I mōhio rānei koe?



Ngā Kēmu Reo Māori

Panui 6

Kia ora, kei ngā tamariki! Kei te kimi rānei koe i ētahi kēmu pārekareka i roto i te reo Māori hei tākaro tahi me tō whānau, me ō hoa? Nā, kua waimarie koe! Kia tirohia e tātou ētahi kēmu!

Pakiaka

Whakaarohia ngā Bananagrams i roto i te reo Māori. He kēmu a Pakiaka hei whakapātari, hei whakawhānui hoki i tō puna kupu. Ko te whāinga, ko te waihanga i ētahi kupu mā te whakamahi i ngā papa pū, ka mutu, kia pārekareka aua mahi rā.

Kaupapa

He kēmu ā-tīma, he kēmu whakaihiihi e matapakia ai koe i te maha o ngā kupu e taea ana i roto i tētahi meneti kotahi! Kei te maha o ngā kupu ka matapakina e koe te tere o tō koke i runga i te papa. Heoi anō, arā ōna āhuetanga hei whakararu i a koe! I a koe e koke ana, ka tau atu koe ki ngā wero a Māui e wana ake ai te kēmu. Ko te tīma ka toa, ko tērā ka tae tuatahi atu ki te wāhi TOA!

Tākaro

He kēmu urutau te kēmu Tākaro e taea nei te purei e ērā e tīmata ana ki te ako i te reo, tae noa atu ki ērā e matatau ana ki te reo. Ehara i te mea ko te whakawhānui i tō puna kupu anake te hua, engari ko te whakapakari hoki i ō pūkenga maumahara.

Nō reira, hei te pō whakangahau e tū mai nei, whakaurua he kēmu reo Māori, pēnei i a Pakiaka, i a Kaupapa, i a Tākaro rānei.

Kia kaha te reo Māori!

He iwi tākarokaro te iwi Māori, ā, he nui ā rātou kēmu i ngā wā o mua, ko ngā pūkenga reretahi pērā i te Tī Rākau me te Whai, ko ngā kēmu maumahara pērā i te Tātai Whetū, me ngā panga pērā i te Tutukai me te Kurawiniwini.

I mōhio
rānei
koe?



Ngā Taupānga Reo Māori

Panui 7

Nō te whanaketanga mai o ngā tūmomo hangarau kua ara mai ngā taupānga hei taputapu whaihua. Ahakoa whakamahia ai mō ngā take whakangahau, mō ngā take mātauranga rānei, he rawe ki ngā tamariki o ēnei rā ngā taupānga me ngā tūmomo hangarau. I ngā tau tata nei, kua waihangatia ētahi taupānga reo Māori hei whakamāmā ake i te taha ako. Anei ētahi tauira hei tiro tiro māu, hei whāki atu rānei ki ngā hoa e ngana nei pea ki te whakapakari ake i ō rātou mōhiotanga ki te reo.

Arā tētahi taupānga e kīia nei ko ‘Kupu’, mā tēnei e taea ai te whakamahi tō kāmera hei tohu i ngā momo taputapu kei ō taha. Hei tauira, kua taea e koe te whakaatu te kāmera ki tētahi tēpu, ā, ko tā te taupānga he whakaatu i te kupu “tēpu”.

Ko tētahi atu taupānga rawe ko tētahi e kīia nei ko “Tōku Reo”. Ko tā tēnei taupānga, he whakaako i a koe ki te reo mā te whakamahi i ngā ataata me ngā ngohe pāhekoheko. Ka taea e koe te ako ngā kupu me ngā kīanga, te whakaharatau tō whakahua, te whakamātau hoki tō mōhiotanga mā ngā kēmu.

Ko “Te Whanake” tētahi anō e whakahuihui nei i ngā akoranga, e taea ai e koe te piki ngā taumata o te ako, e āta whakawhanake ana i ō mōhiotanga.

Hei whakamutu atu, ko te “Kōrero Māori” tētahi taupānga e aro ana ki ngā whakawhitinga reo, tae rā anō ki ngā kaupapa o ia rā, pērā i te whānau, i te kai, i ngā tūtakinga, me te hoatu hoki i ngā tauira o ngā mōmo whakawhitinga kōrero tērā pea ka kitea i ētahi horopaki.

Ka whakaatu ēnei taupānga i te mīharo o ngā whakapaunga kaha kia māori ai te reo, kia maha ake ai hoki ngā āheinga e wātea ana ki te ako i te reo. Kei whea mai!

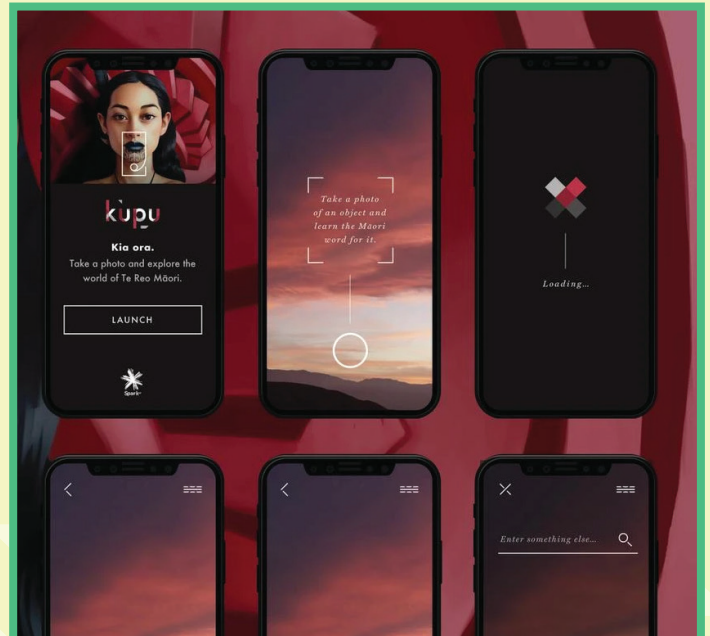
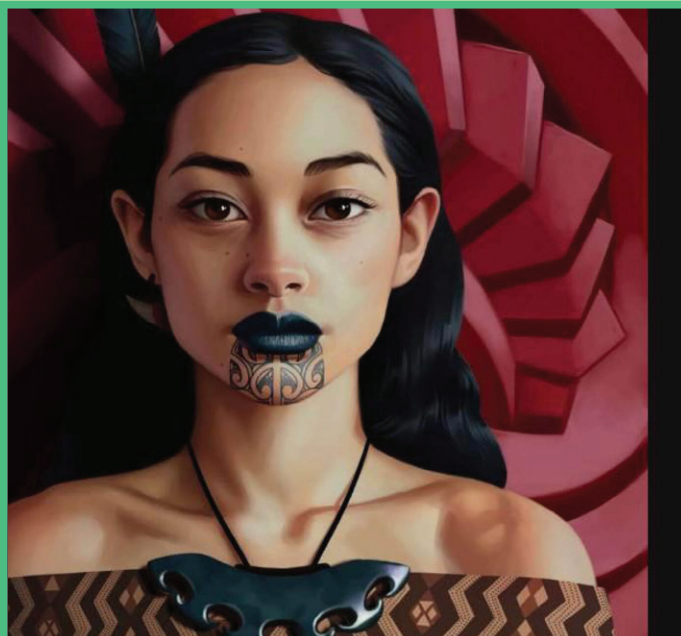
Kupu Hou

Tūmomo – variety. *He nui ngā tauira rerekē o tētahi kaupapa.*

Taupānga – apps (software applications). *He momo pūmanawa, he taputapu whai hua.*

Whakaharatau – to practise. *He mahi akoako, he parakitihī.*

Pāhekoheko – to combine, mix. *He honohono, he whakahanumi.*



Mahuru Māori - Kia Kōrero Tātou i te Reo Māori

Panui 8

Kua rongorānei koe mō Mahuru Māori? He wero reo Māori nā Paraone Gloyne i tīmata i te tau 2014. Ko te whāinga o Mahuru Māori, ko te kōrero Māori i te marama o Mahuru. He huarahi tēnei e whakanuia ai, e māori ai hoki te rere o te reo i ā tātou mahi o ia rā.

Kāore he paku aha mehemea he iti tō reo, he nui rānei, e taea tonutia ana tō whai wāhitanga atu. Ko te mahi māmā pea ko te mihi ki te katoa i te reo Māori, ko te kōrero Māori anake rānei mō tētahi wāhanga o ia rā.

Arā te huhua o ngā tāngata e whai wāhi atu ana ki a Mahuru Māori, ā, e taea nei e tātou katoa te reo Māori te horapa ki ō tātou wāhi noho, me te hapori. E āhei ana hoki koe ki te whāngai i tāu e mōhio nei ki ētahi atu, te kawē i te reo Māori ki tō kura, te whakatenatena hoki i ētahi atu ki te ako, ki te whakamahi hoki i te reo.



I te tau 1953, e 25% anake o ngā tamariki Māori i taea te kōrero Māori, nāwai rā ka heke anō ki te 5% i te tau 1975.

I mōhio rānei koe?

He wā tēnei mō tātou ki te whakaatu i te pai o te reo ki te Māori, ki a tauwiwi hoki, me kore e ora tonu te reo. Nō reira, kia takatū tātou mō Mahuru Māori 2023! Ki te hīkaka koe, rēhita mai, ā, ka tukuna atu hoki ētahi rauemi papai hei tautoko i a koe.

Kia kaha! Rēhita i www.mahurumaori.com



Mahuru
Me kite, me rongorā, me kōrero

Kia Kaha te Reo Māori!



Image courtesy of Alexander Turnbull Library Ref: EP/1991/2155/3-F

Panui 9

Koinei Te Wiki o te Reo Māori! He wiki motuhake tēnei e whakanuia ai te reo Māori, ā, nō te tau 1975 kua tū tēnei wiki hei whakanui i te reo i ia tau.

I mua i Te Wiki o te Reo Māori tuatahi, i āwangawanga ētahi mō te oranga tonutanga o te reo Māori nā te mea e mate haere ana. Ko te hua o tēnei āwangawanga, ko te aranga ake o Te Wiki o te Reo Māori me ngā kaupapa maha i whakatūria hei tautoko i te whakamahinga o te reo.

Putā noa i ngā tau rima tekau ka hori, arā te maha o ngā kaupapa mīharo hei whakanui i Te Wiki o te Reo Māori. Ko ētahi o ēnei kaupapa, ko:

- te whakaputa a Kūkara i tētahi kōwhiringa reo Māori o tā rātou taupānga i te tau 2008.
- te whakamāori i te kiriata a Disney e kīia nei ko 'Moana', ā, i whakaputaina i te tau 2017.
- te tūnga tuatahitanga o 'Te Wā Tuku Reo Māori' i te tau 2021 i whai wāhi atu ai tōna kotahi miriona tāngata i Aotearoa nei ki te reo Māori i te wā kotahi: ahakoa pānui mai, ahakoa tuhituhi mai, ahakoa whakarongo mai, ahakoa mātakitaki mai, ahakoa kōrero mai rānei!

Kua tino waimarie tātou ki te kite i te tipu haere o te whakamahinga o te reo i roto i ngā tau, ā, ka pēnei tonu i roto i ngā tau kei mua tonu i te aroaro!

E aha ana koe ki te whakanui i Te Wiki o te Reo Māori?

He ororeo te reo Māori, arā, ka rite te whakahuatia o te kupu ki tōna tātakinga.

I mōhio rānei koe?

Te Hītori o te Kōhanga Reo

Panui 10

Ko ngā kōhanga reo tētahi kaupapa mā ngā kōhungahunga. I whakatūria ai hei tautoko i te whakarauoratanga o te reo Māori me ngā tikanga. He āhuetanga mātuatua tēnei mō te whakarauora i te reo, nā te mea he tere ake ngā tamariki i ngā pakeke ki te ako i te reo. Ka mutu, he whakaū hoki tēnei i te noho māori mai o te reo i roto i te hunga taiohi, i te hunga pērā i a koutou.

I mua i te whakatūnga o ngā kōhanga reo, he tokomaha ngā tamariki Māori kāore i kōrero i te reo, ka mutu, ka whakaako ngā kura i te reo Pākehā anake. He raru nui tēnei, nā te mea he mea nui te mōhio ki tō reo i a koe e pakeke mai ana!

Neke atu i te whā rau e ono tekau ngā Kōhanga Reo puta noa i Aotearoa.

I mōhio rānei koe?

I whakatūria e tētahi kāhui mātua, kaumātua hoki, te kōhanga reo tuatahi ki Wainuiomata i te tau 1982. Nō mua noa atu i ngā tau e 40!

Nō konā, he maha ngā kōhanga kua whakatūria puta noa i Aotearoa. Arā te nui o ngā painga kua puta mai i ngā kōhanga reo i roto i ngā tau hei tautoko i te whakarauoratanga o te reo Māori, ā, e pēnei tonu nei i ēnei rā.

I tae atu rānei koutou ko ō hoa ki tētahi kōhanga reo?



AKO PANUKU
Inspiring Learning

Pū te Rongo He Puka

Whakanuia
te reo Māori



Haemata



Te Tāhuhu o
te Mātauranga
Ministry of Education

Public Interest
Journalism

funded through
NZ On Air



**KIWIKIDS
NEWS**

www.akopanuku.tki.org.nz